

The Classical American House

Shingle Style Residence

Atlantic County, New Jersey



Architect: John Milner Architects
Contractor: Cherokee Construction
2017



Northeast elevation at dusk, showcasing how the second and first floors feature flared shingles facades that mimic traditional Shingle Style homes of the region. The third floor features commanding views of the ocean from a private deck.

This new residence occupies a unique position on the New Jersey shore, with expansive sandy beaches on two sides and spectacular views to the north, east and south.

In keeping with the traditional Shingle Style vernacular architecture of the mid-Atlantic coast, the architects created a home that takes advantage of the site’s unique features, while also maintaining traditional Shingle Style details and proportions.

The façade features two-toned cedar shingles, painted brackets and paneling and a Vermont slate roof.

The plan is oriented with the second floor serving as the primary level to allow for better views of the ocean, with the first and third floors serving as secondary spaces. The first floor contains a formal entry hall, and spaces for entertaining that open onto the main deck, outdoor kitchen and swimming pool.

Throughout the house, interior *millwork* is detailed in keeping with the Shingle Style and features beadboard patterned ceilings, full-height paneled walls and numerous built-in cabinets and benches.

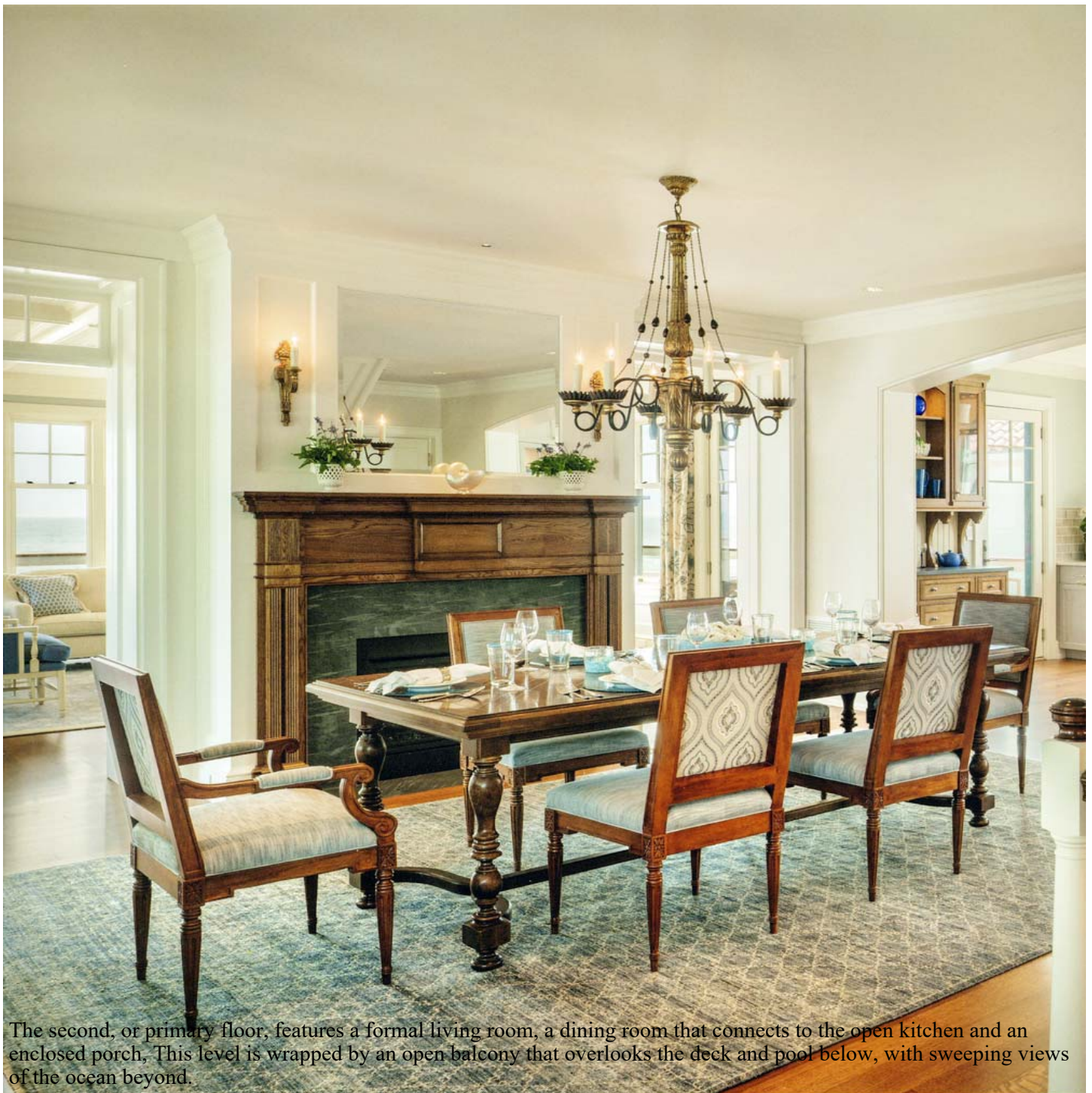


Living room looking east. Exterior windows and doors are maximized to allow for sweeping views of the ocean beyond.

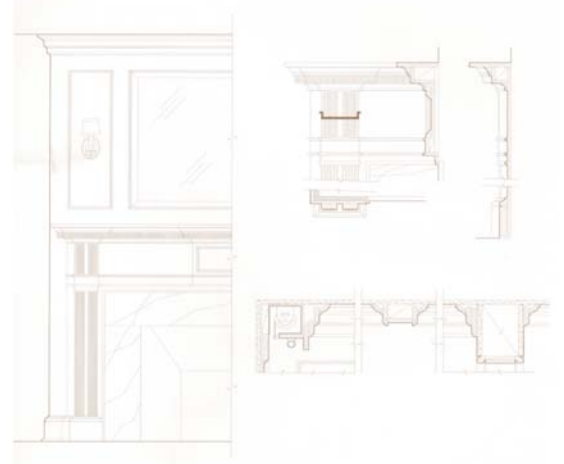


Entry doors looking through northeast loggia; Ipe decking rises up and over the existing bulkhead and creates a bench that wraps two sides of the property for easy access to the beach, seen here across the northeast loggia with the ocean beyond.





The second, or primary floor, features a formal living room, a dining room that connects to the open kitchen and an enclosed porch. This level is wrapped by an open balcony that overlooks the deck and pool below, with sweeping views of the ocean beyond.



Custom-designed white oak mantel details were inspired by mid-19th century examples from the region.



Entry hall looking towards front door and main stairs



Main stair between first and second floors

